



Peri-cene WP4b: Manchester wider region & Irwell catchment:

Peri-urban climate map layers

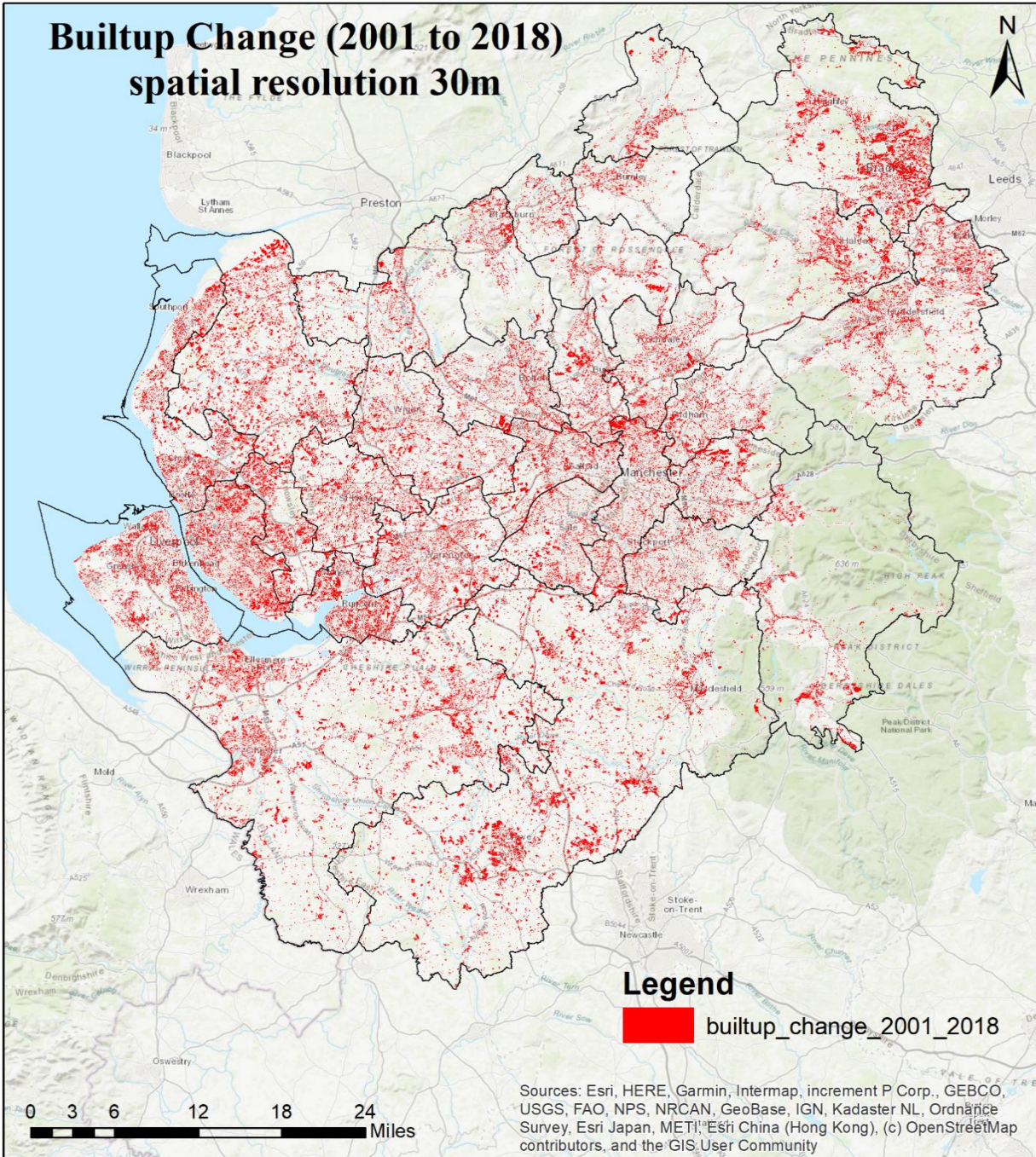
MS 12-10-20a

CONTENTS

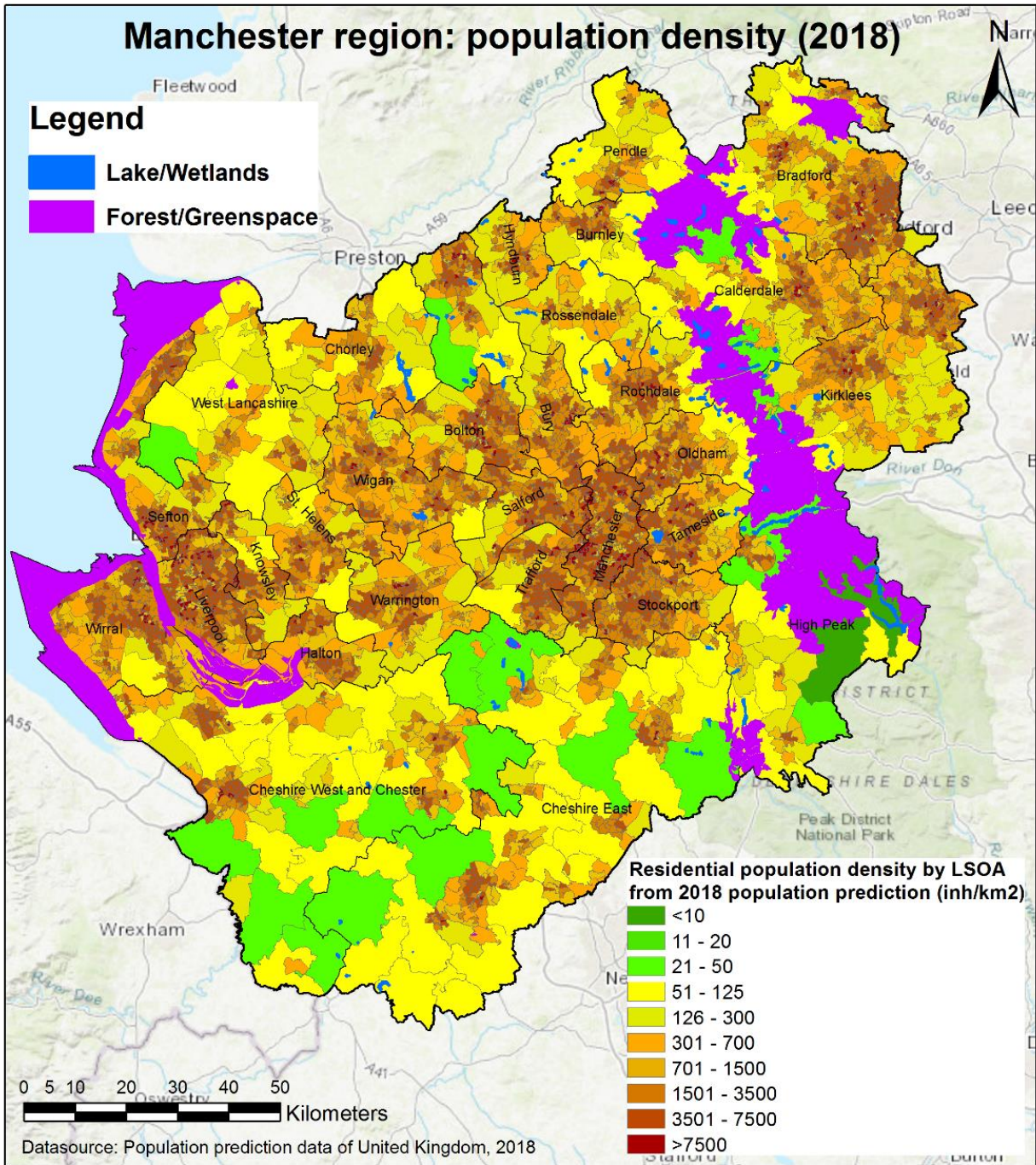
| | | |
|----|------------------------------------------------|----|
| 1. | PERI-URBAN THEME..... | 2 |
| a) | Built Up Change | 2 |
| b) | Population Density | 3 |
| c) | Population Density Change | 4 |
| 2. | CLIMATE THEME | 5 |
| a) | Flood risk areas and peri urban zonation | 5 |
| b) | Forest fire areas & peri urban zonation | 6 |
| 3. | VULNERABILITY THEME..... | 7 |
| a) | Land/Farm Vulnerability..... | 7 |
| b) | Annual aridity | 8 |
| c) | Topography & flood risk | 9 |
| d) | Groundwater Potential..... | 10 |
| 4. | PRIORITIES & OPPORTUNITIES..... | 11 |
| a) | Built up change & water system..... | 11 |
| b) | Built up change & flood risk | 12 |
| c) | eco-opportunities | 13 |
| d) | Natural Features..... | 14 |
| E) | Overlay With Local Zones | 15 |
| | Key to local areas:..... | 15 |

1. PERI-URBAN THEME

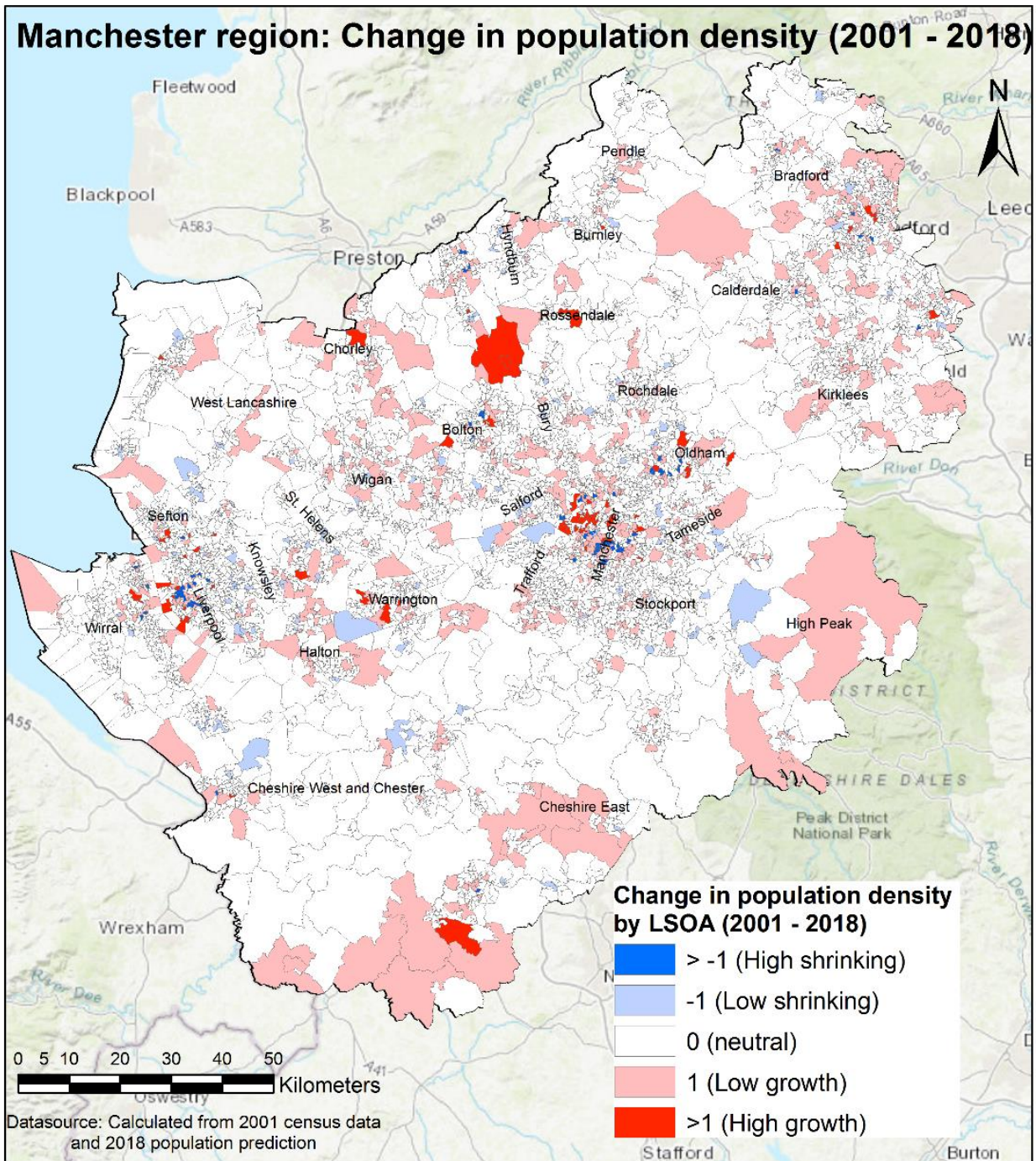
A) Built Up Change



B) Population Density

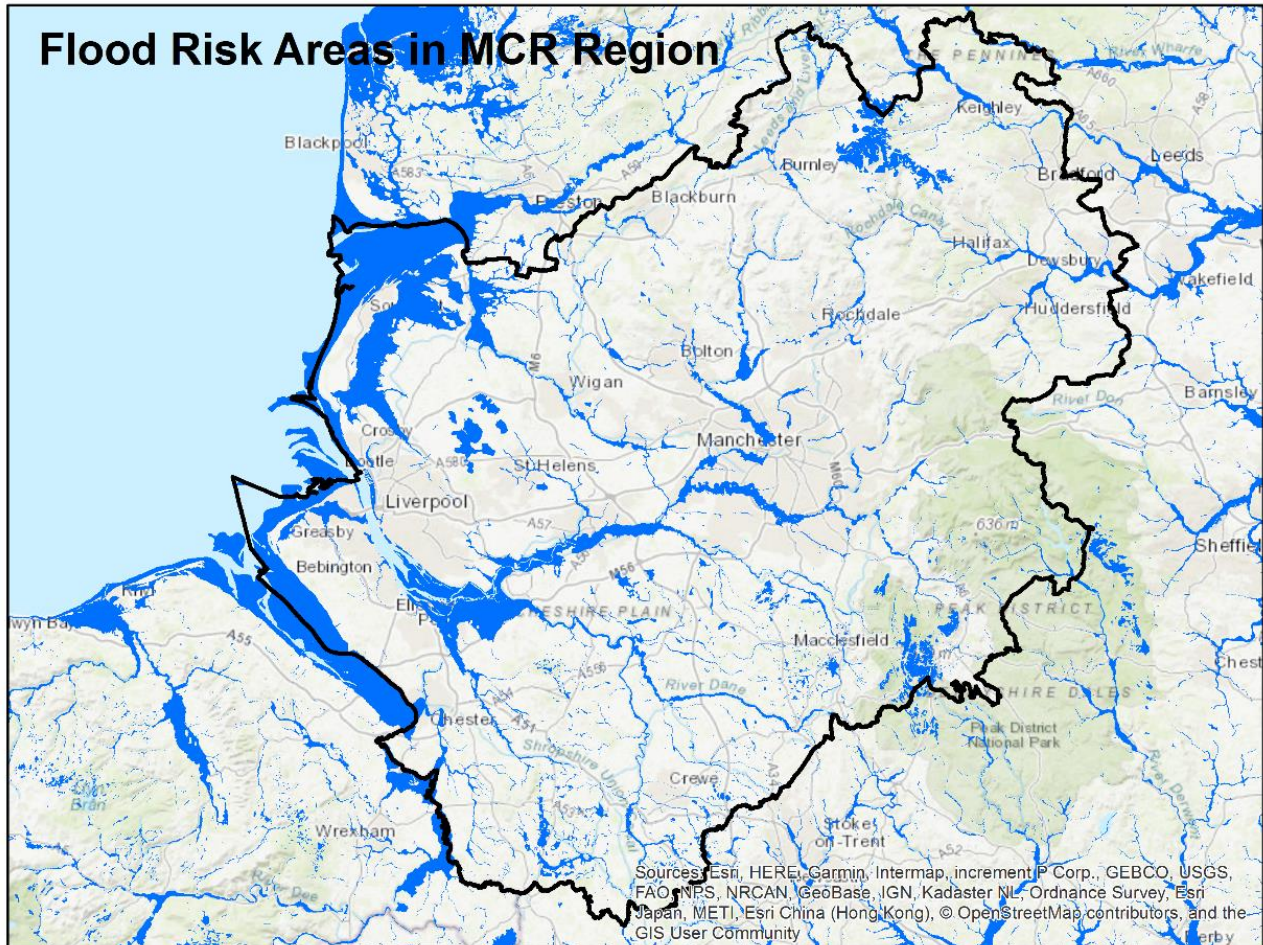


C) Population Density Change

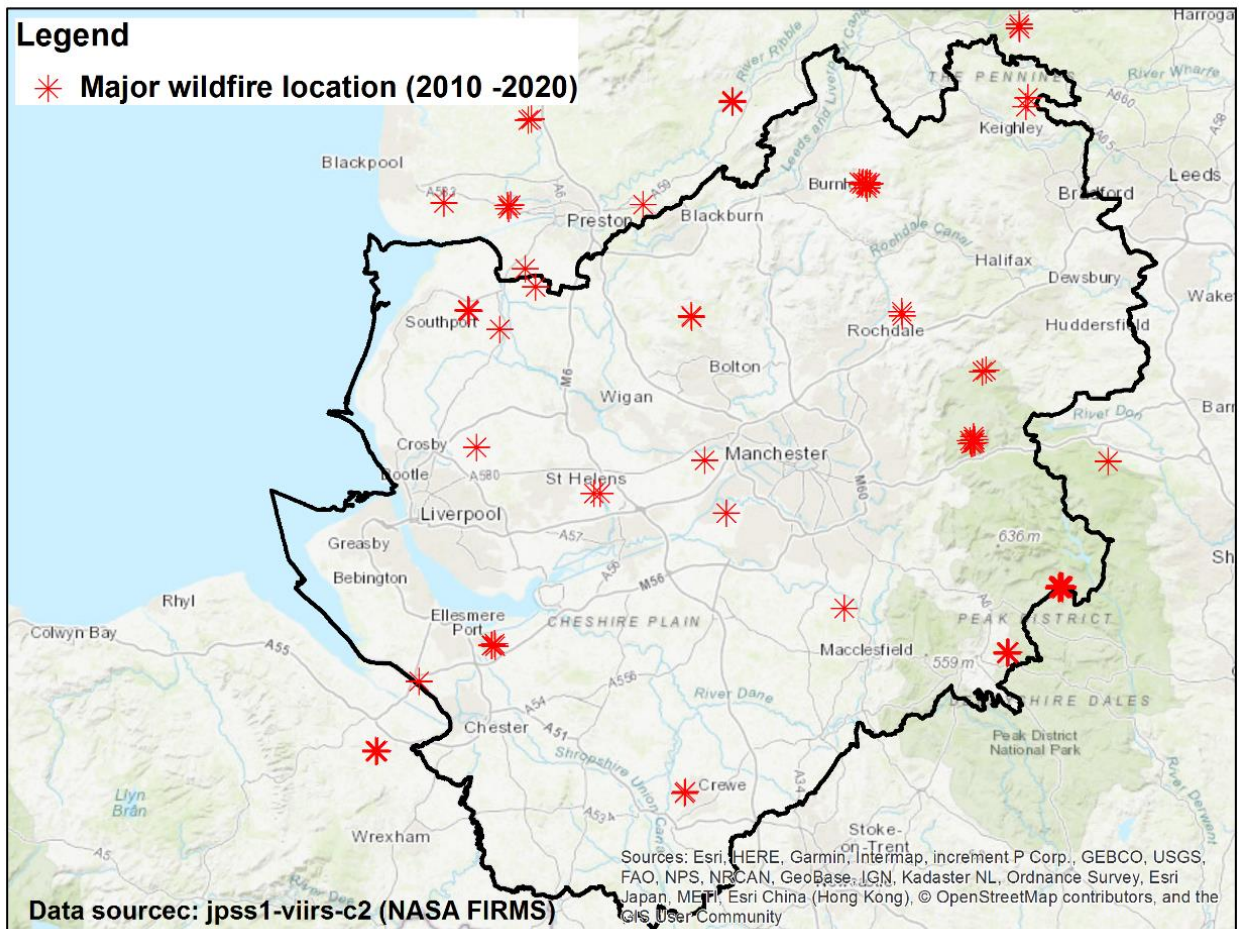


2. CLIMATE THEME

A) Flood risk areas and peri urban zonation

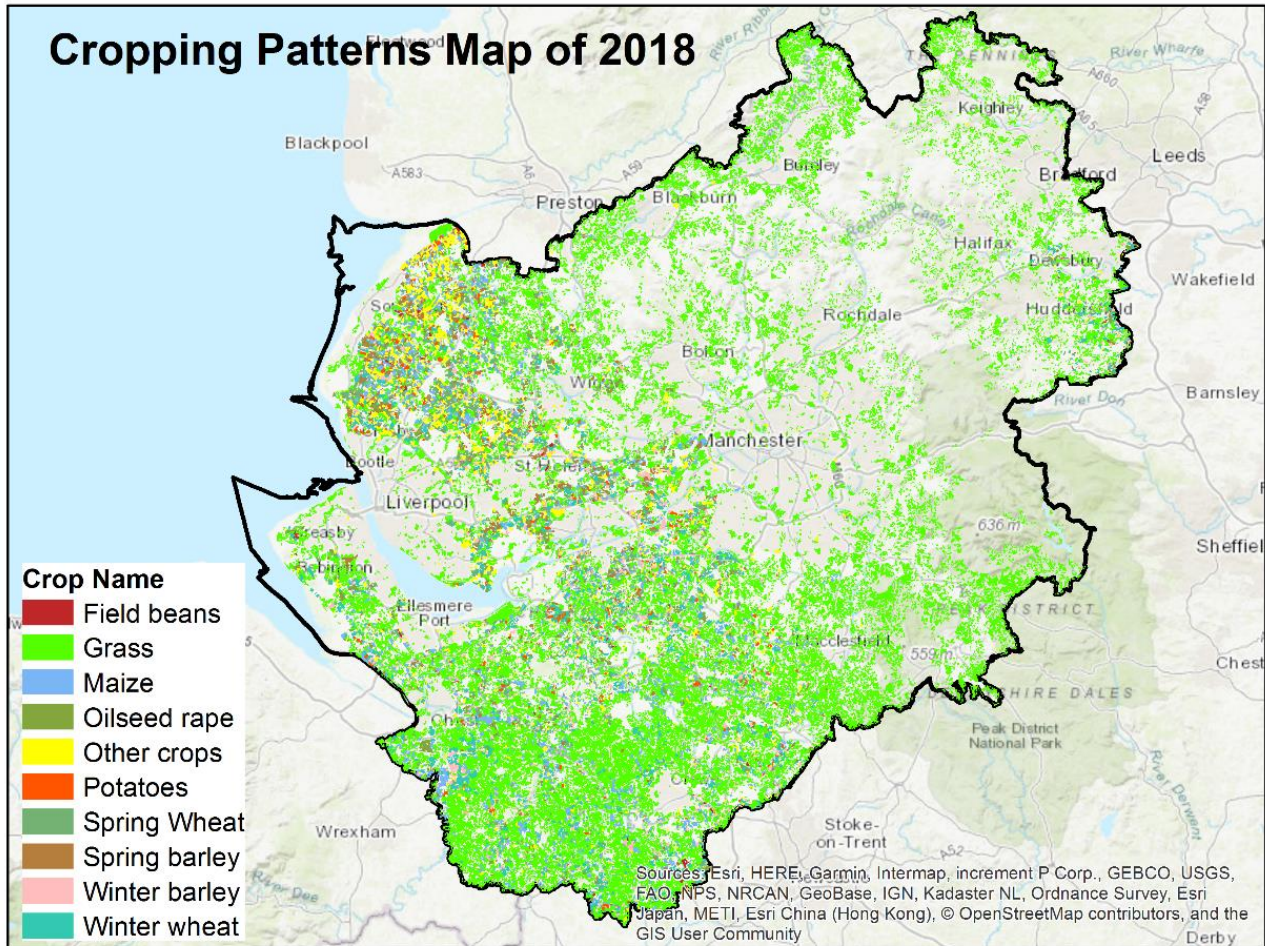


B) Forest fire areas & peri urban zonation

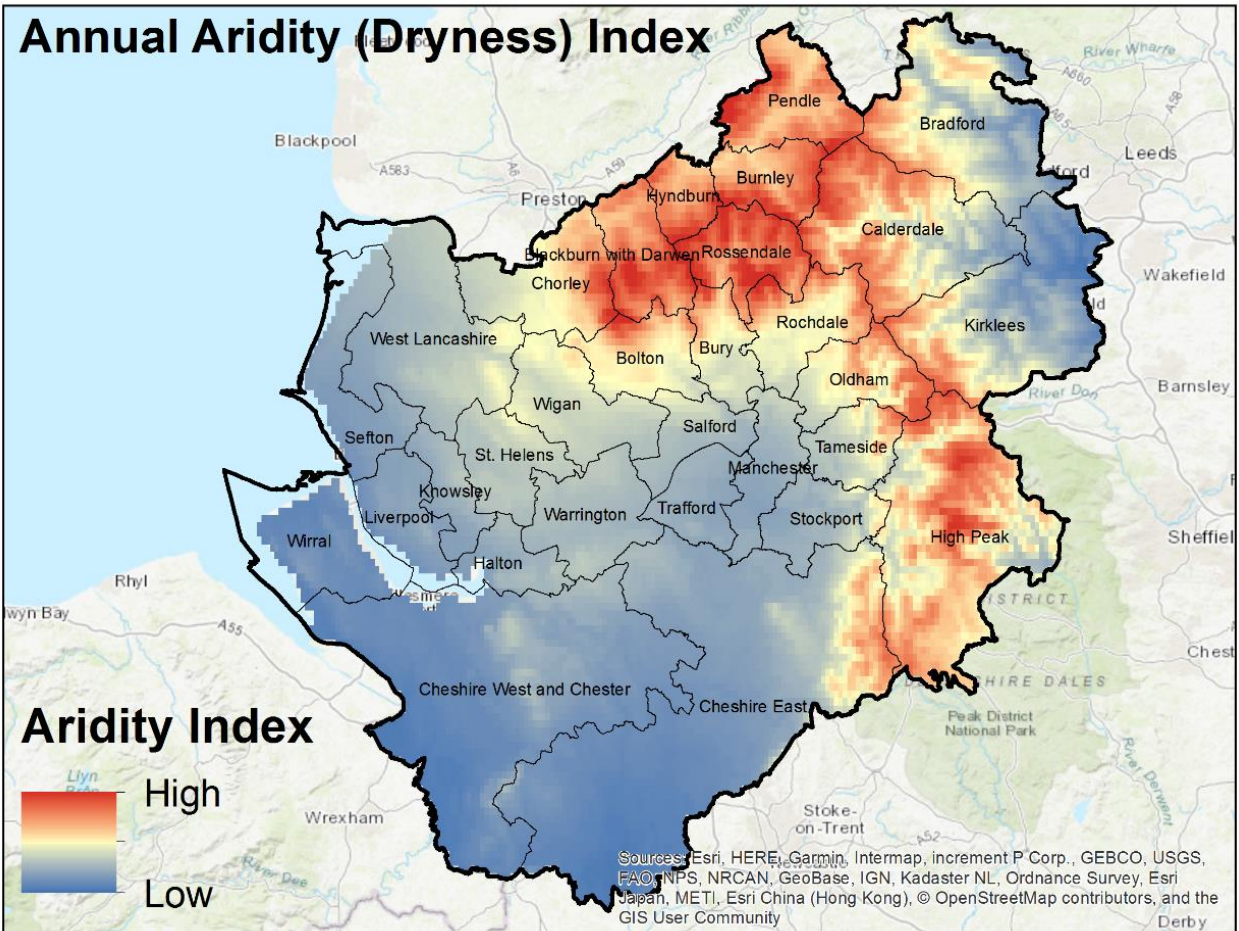


3. VULNERABILITY THEME

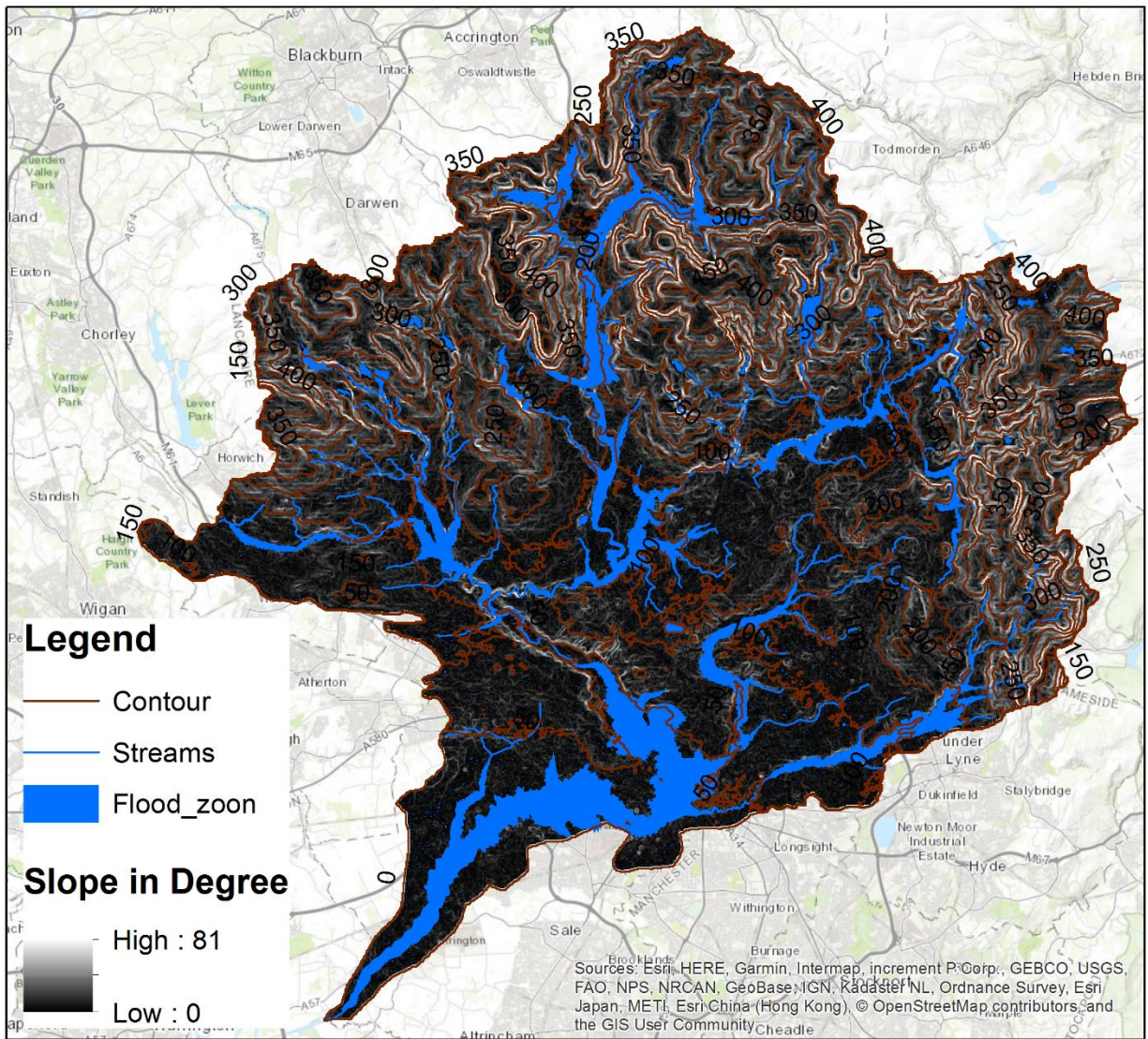
A) Land/Farm Vulnerability



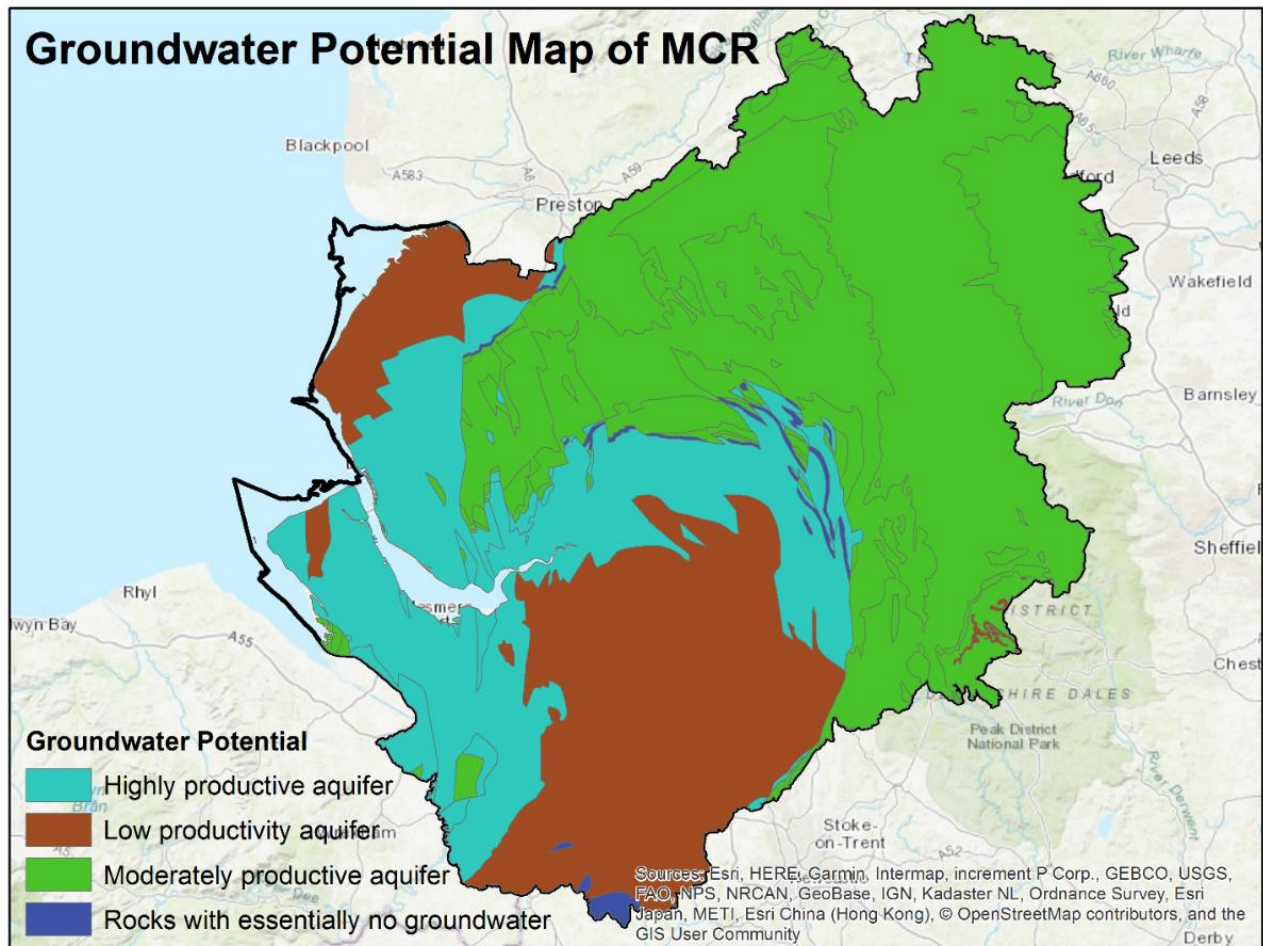
B) Annual aridity



C) Topography & flood risk

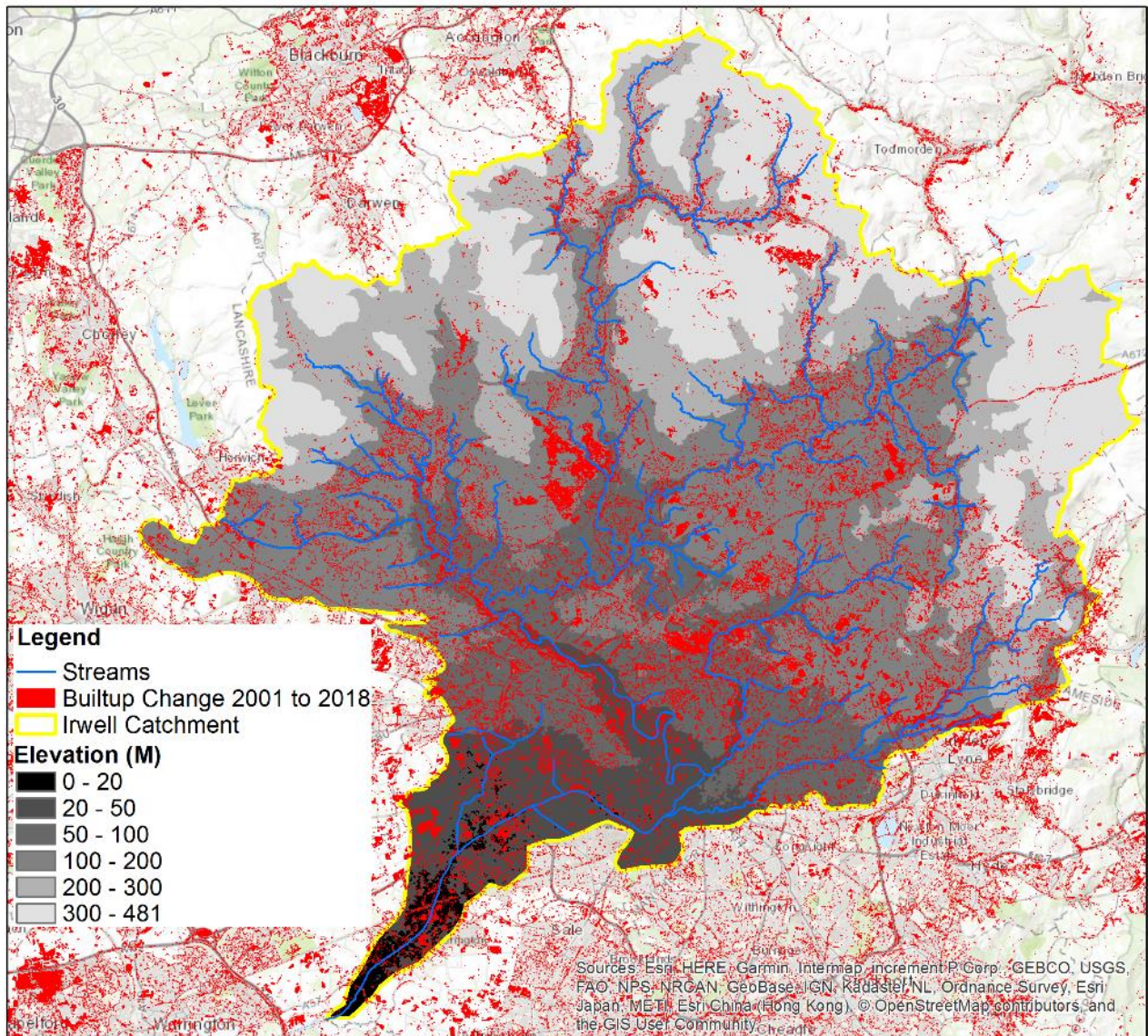


D) Groundwater Potential

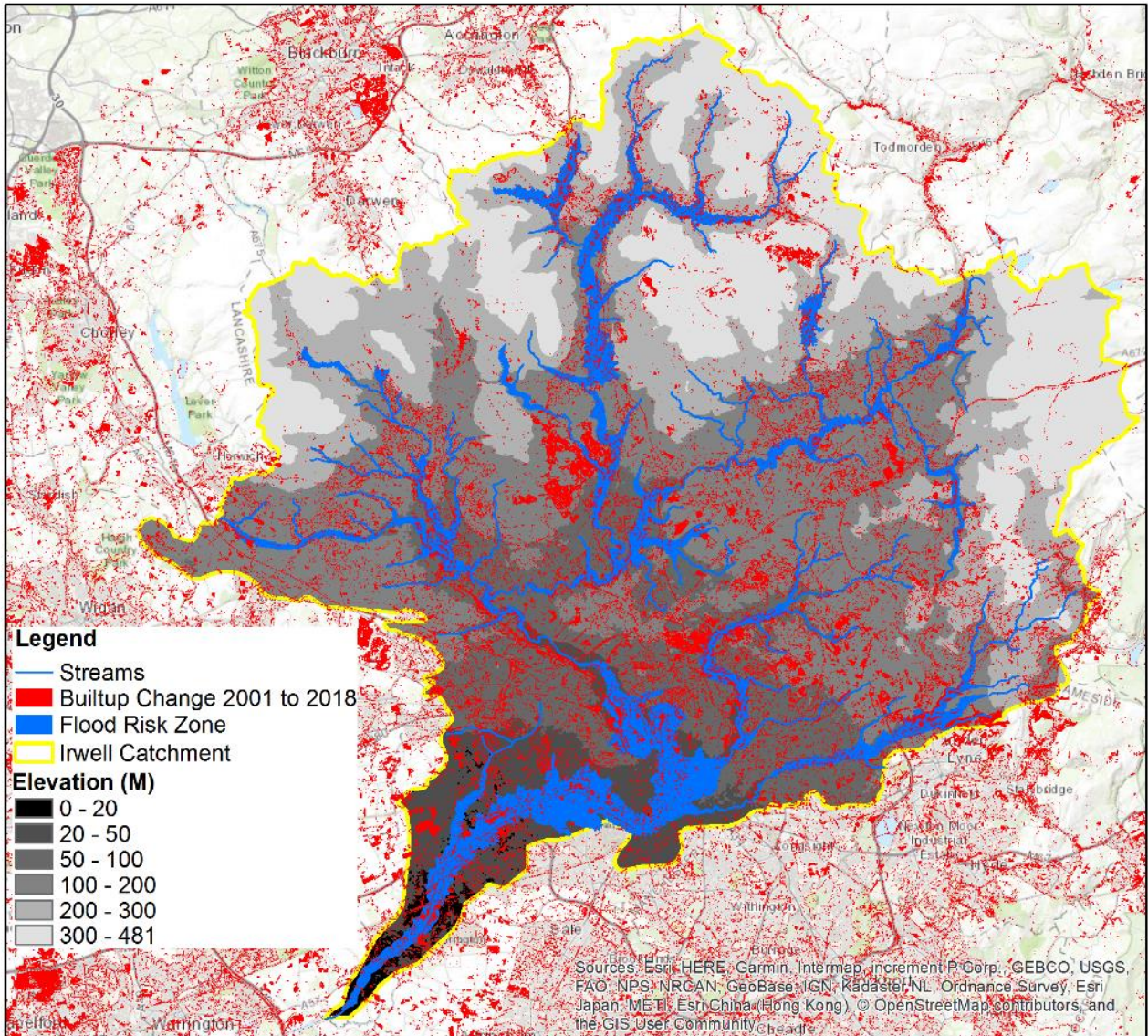


4. PRIORITIES & OPPORTUNITIES

A) Built up change & water system



B) Built up change & flood risk

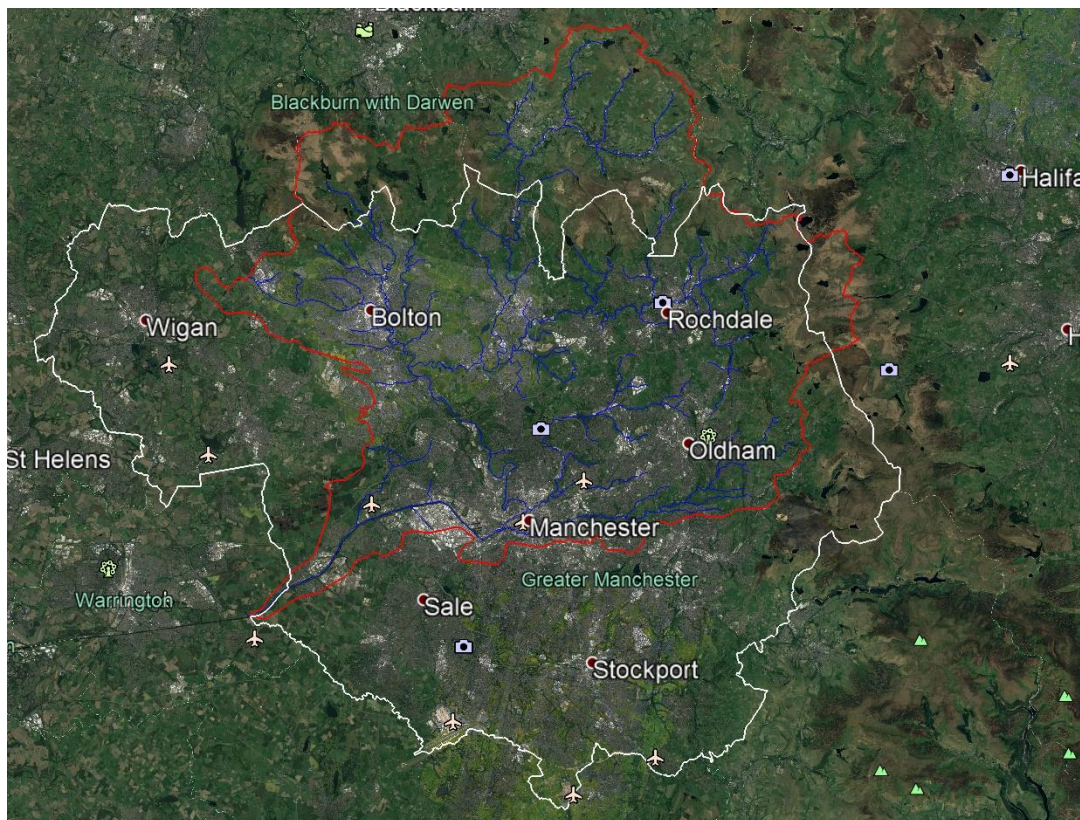


C) ECO-OPPORTUNITIES

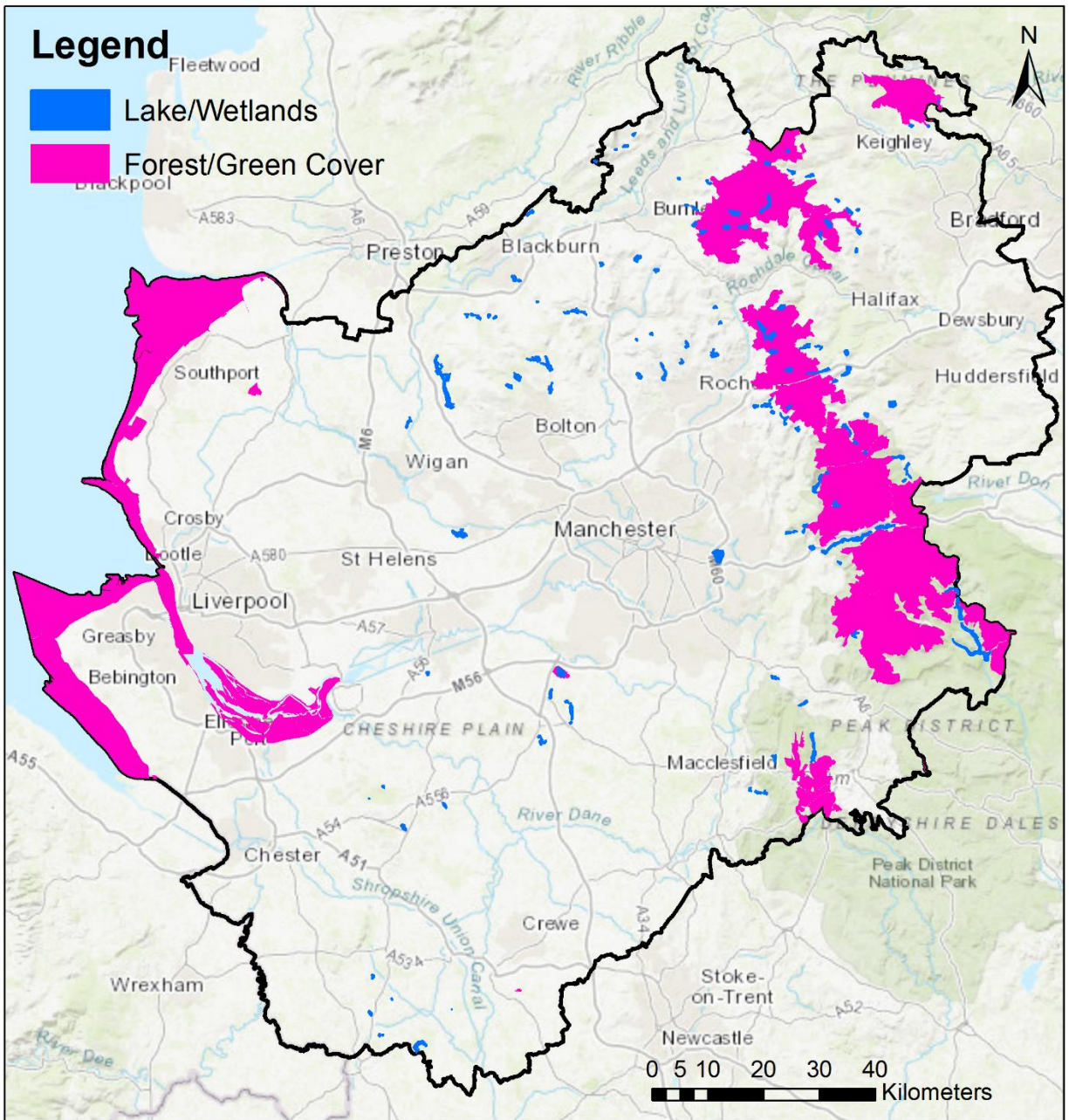
Forest

Priority Wetlands areas in GM Peri urban areas

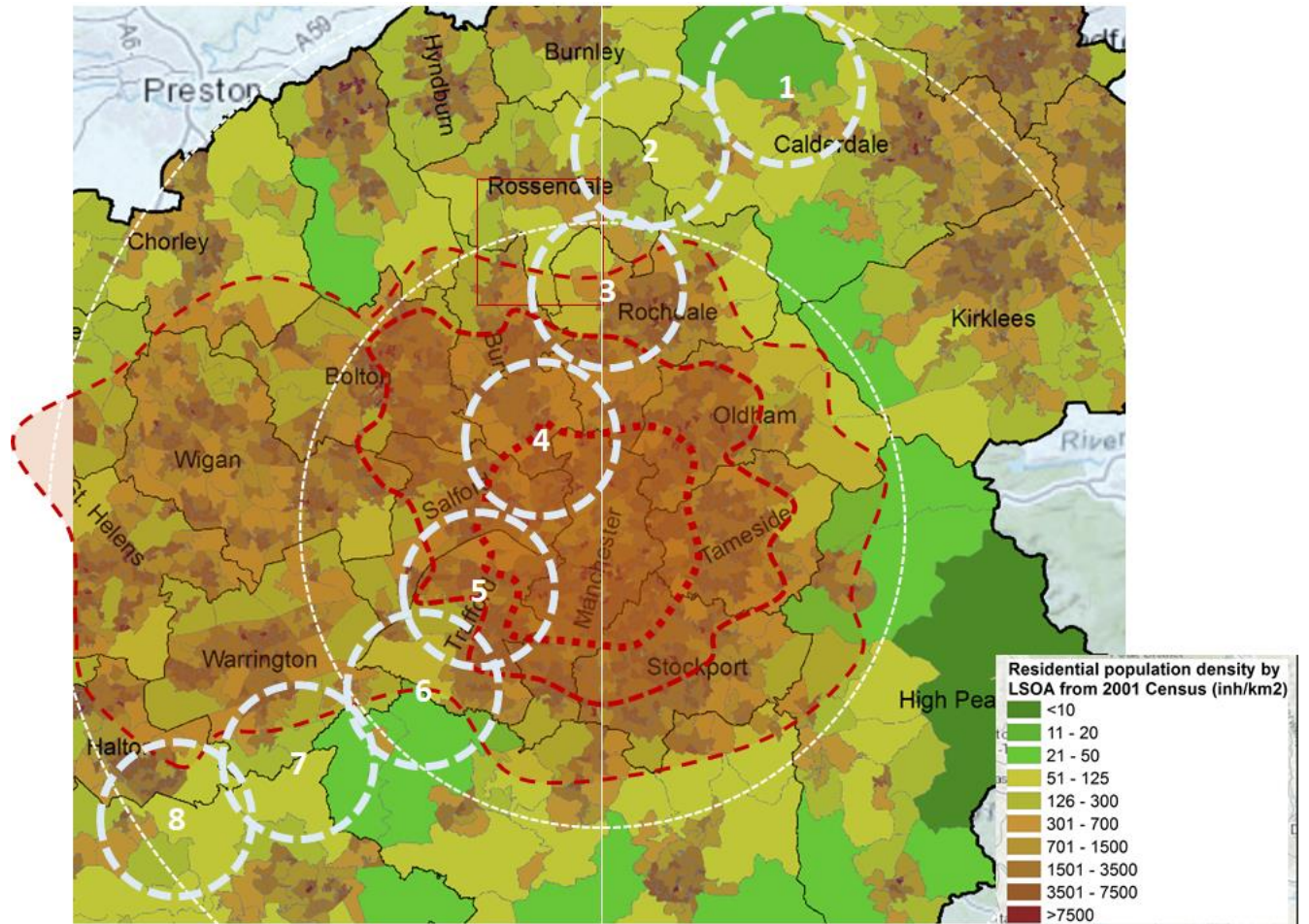
- Dove Stone Reservoir, Greenfield
- Hollingworth Lake, Rochdale
- Sale Water Park and surrounding, Sale
- Chorlton areas
- Manchester Ship Canal, Manchester
- Healey Dell Nature Reserve
- Greenbooth Reservoir
- Werneth Low Country Park
- Tandle Hill Country Park



D) Natural Features



E) Overlay With Local Zones



KEY TO LOCAL AREAS:

the relevant bands / thresholds are defined for each city case study by analysts / stakeholders.
 The potential contours are defined in qualitative scale: 'low / low-medium / medium / medium-high / high.

| | NEAR PROXIMITY (main urban fringe) <20km & medium potential | FURTHER PROXIMITY (main urban hinterland) <40km & low potential |
|---------------------------------------------------|---------------------------------------------------------------------------------------------|------------------------------------------------------------------------------------------------------|
| HIGHER POPULATION DENSITY: 100-300 | 5) sub/ex-urban sprawl near main urban fringe 6) semi-open land near to sub-urban sprawl | 7) sub/ex-urban sprawl in hinterland 8) surroundings & semi-open land near to sub/ex-urban sprawl |
| LOWER POPULATION DENSITY: 10-100 | 3) open land near main urban fringe 4) open land within main urban area | 1) open land between small towns in hinterland. 2) surroundings of small towns in hinterland |