



Peri-cene WP4a: Chennai Proposed Metropolitan Region:

Peri-urban climate map layers

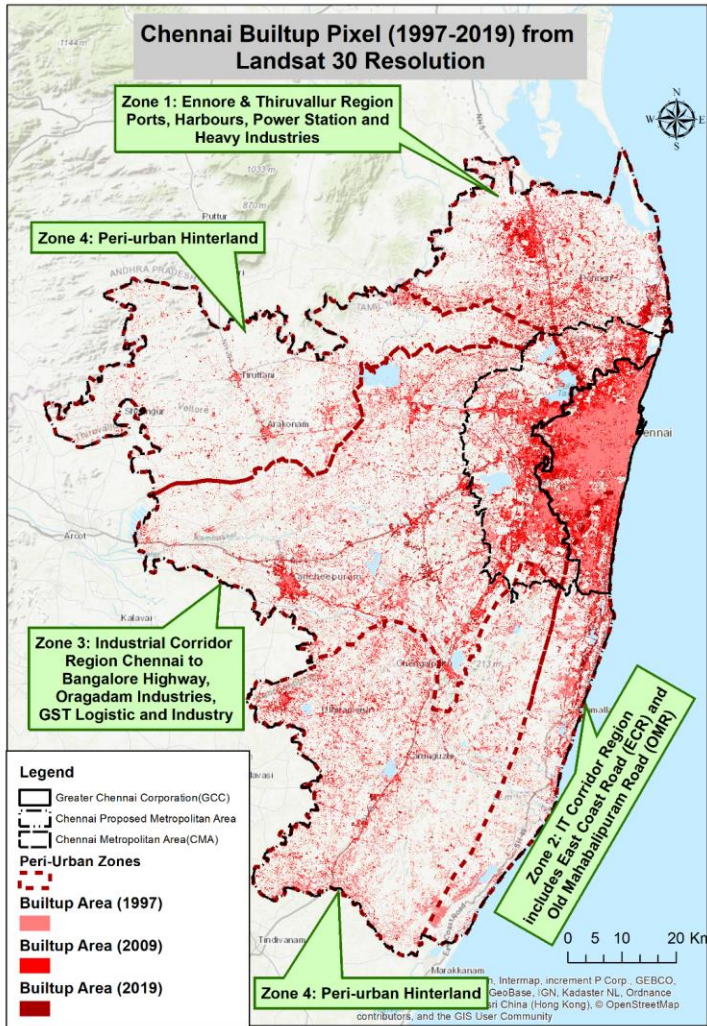
V0.1 - AR & TP 16-10-20

Contents

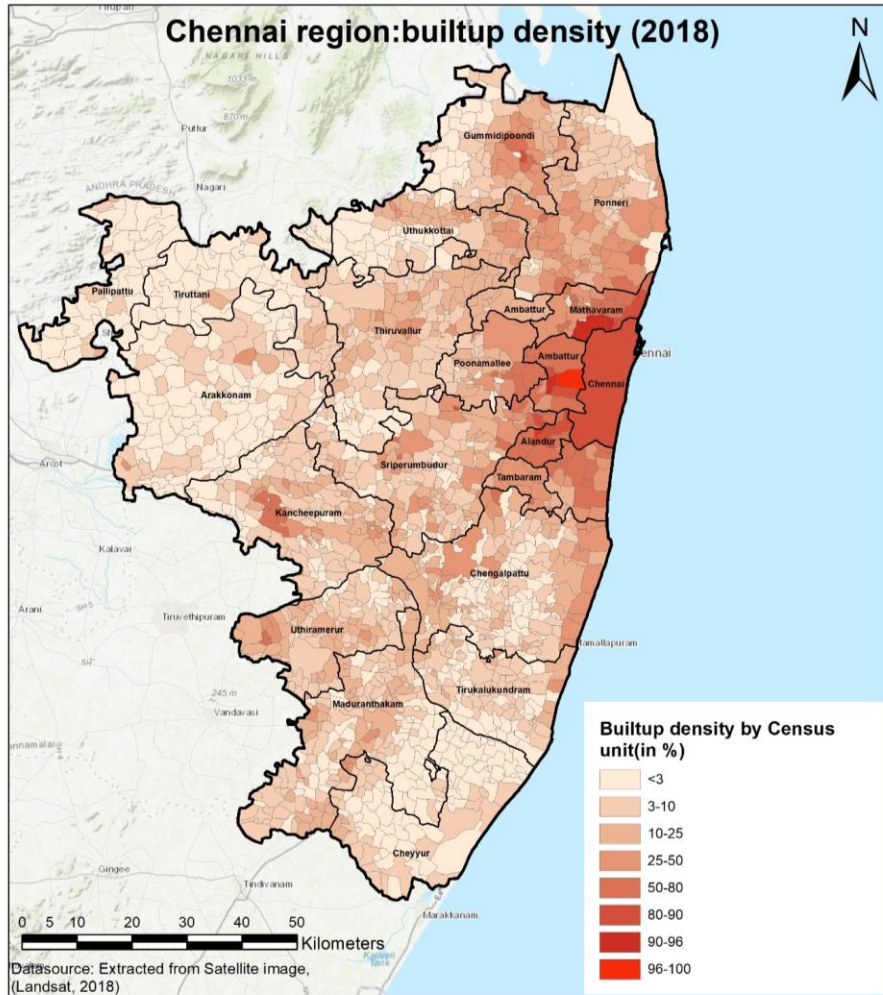
1. PERI-URBAN THEME.....	2
A) Built Up Change	2
B) Built Up Density	3
C) Population Density.....	4
D) Population Density Change	5
2. CLIMATE THEME	6
A) Flood Risk Area and Peri-urban Zone	7
B) Chennai Sea-Level Inundation Scenario	8
C) Chennai Annual Precipitation.....	9
D) Chennai Mean Annual Temperature.....	10
3. VULNERABILITY THEME.....	11
A) Land use and Land cover Map.....	11
B) Chennai Aridity Index Map.....	12
C) Chennai Groundwater Prospect.....	13
4) PRIORITIES AND OPPORTUNITIES	14
A) Chennai Water Ecosystem	14

1. PERI-URBAN THEME

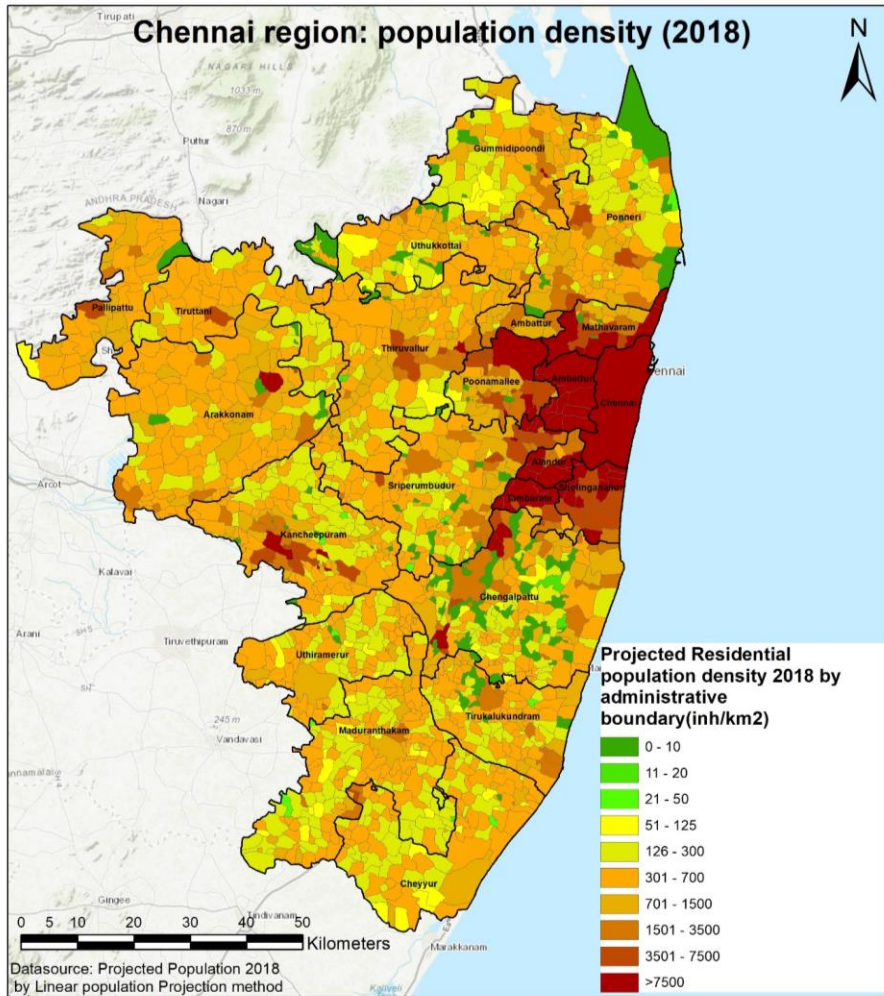
A) Built Up Change



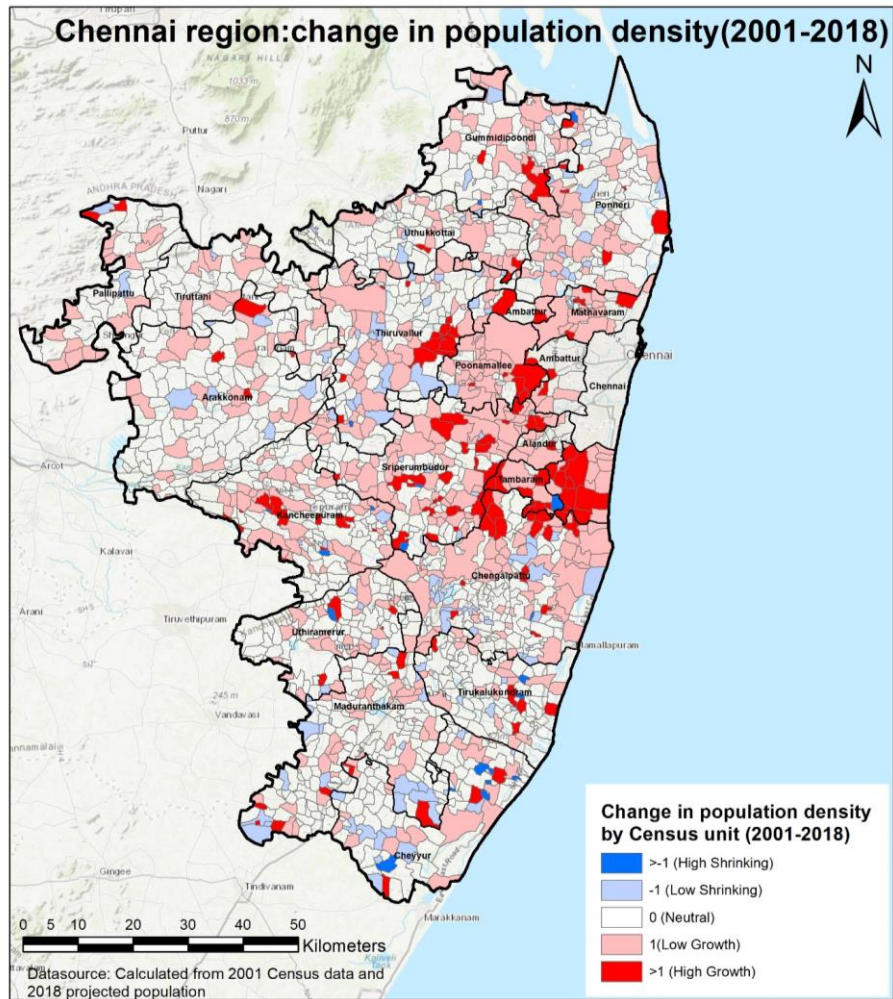
B) Built Up Density



C) Population Density



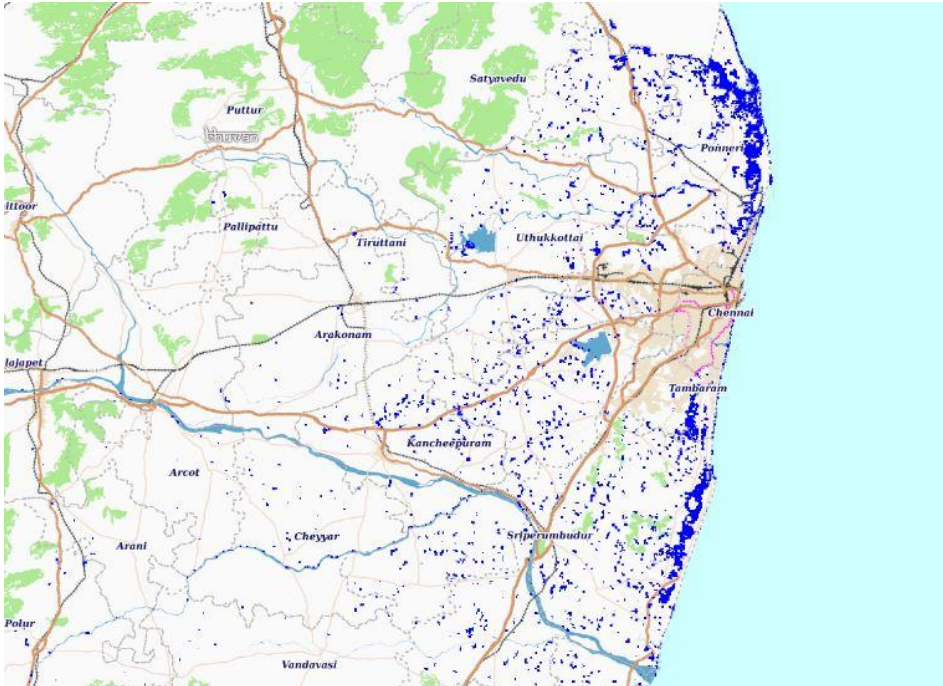
D) Population Density Change



2. CLIMATE THEME

A) Flood Risk Area and Peri-urban Zone

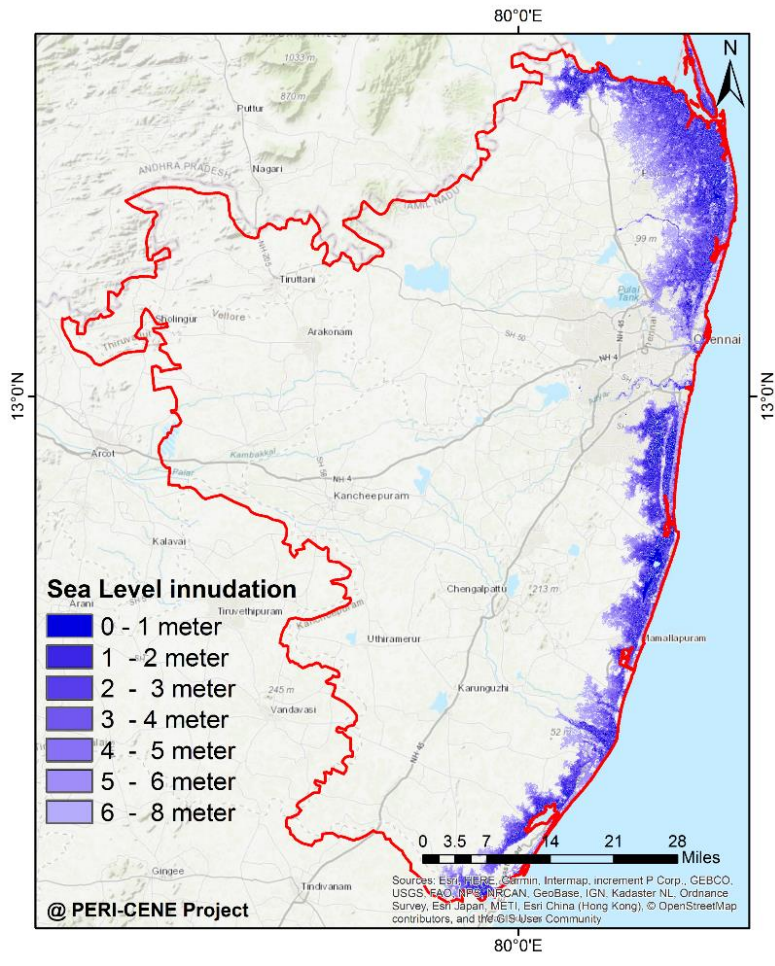
Chennai aggregated flood inundation map: (2003-2013)



Commented [Mr1]: Higher resolution flood risk map yet to be generated for Chennai Case. This map is only for visualization purpose.

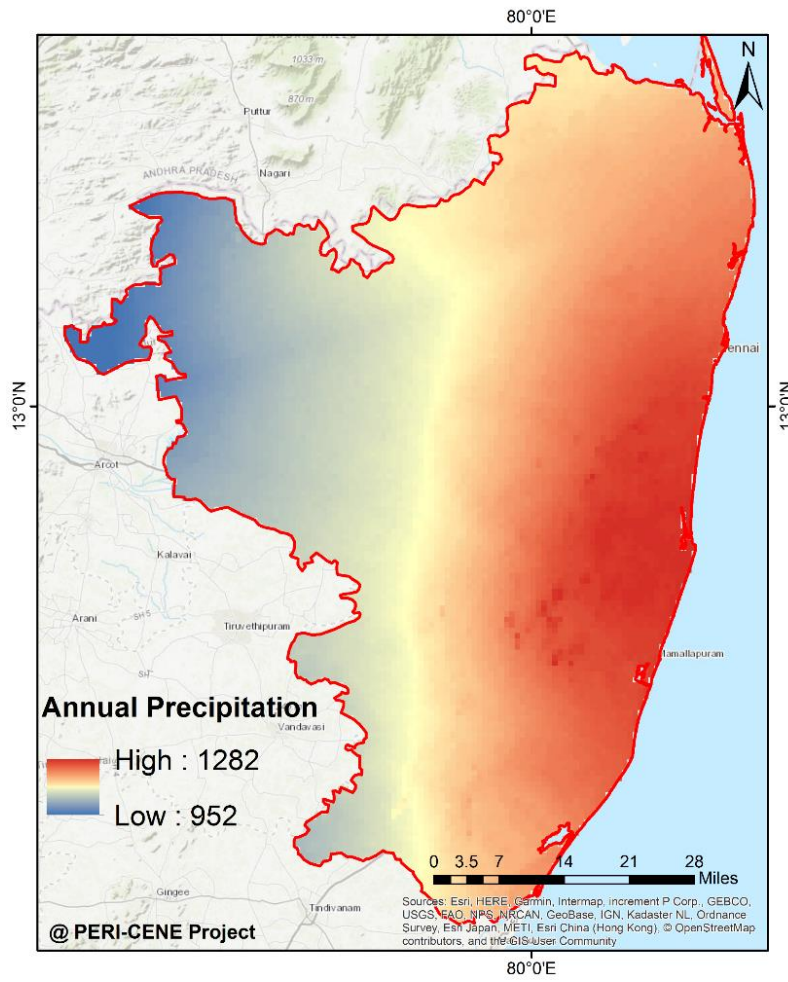
Source: Bhuvan, NRSC

B) Chennai Sea-Level Inundation Scenario



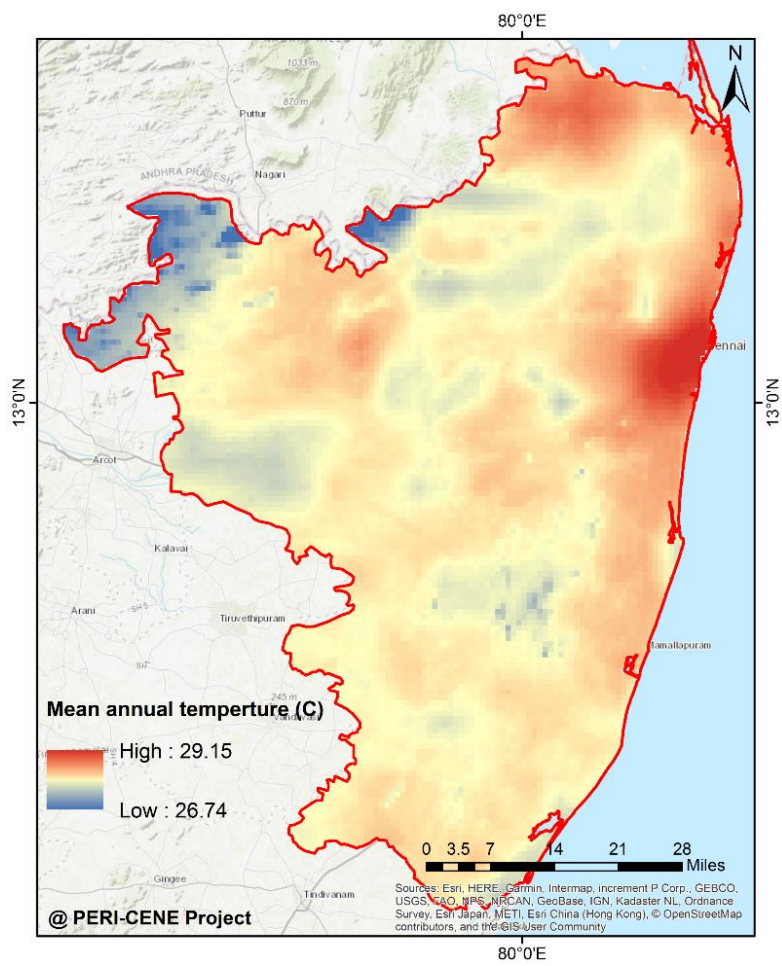
Commented [Mr2]: Using elevation data, the sea level inundation map is prepared by Mehehub. This also needs to be verified with global datasets.

C) Chennai Annual Precipitation



Source: Mehehub (BioCLIM Data)

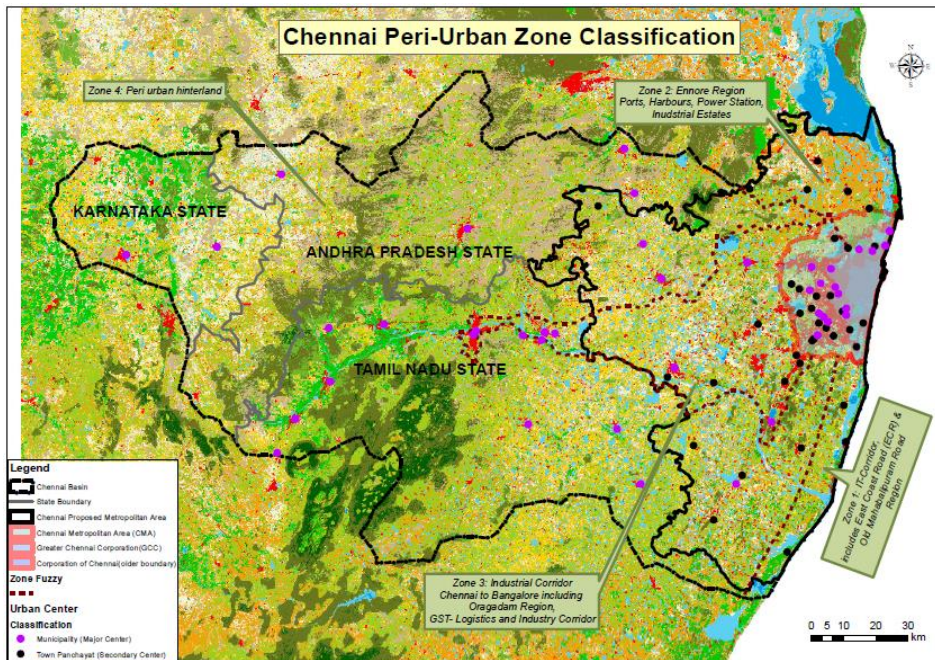
D) Chennai Mean Annual Temperature



Source: Mehehub (BioCLIM Data)

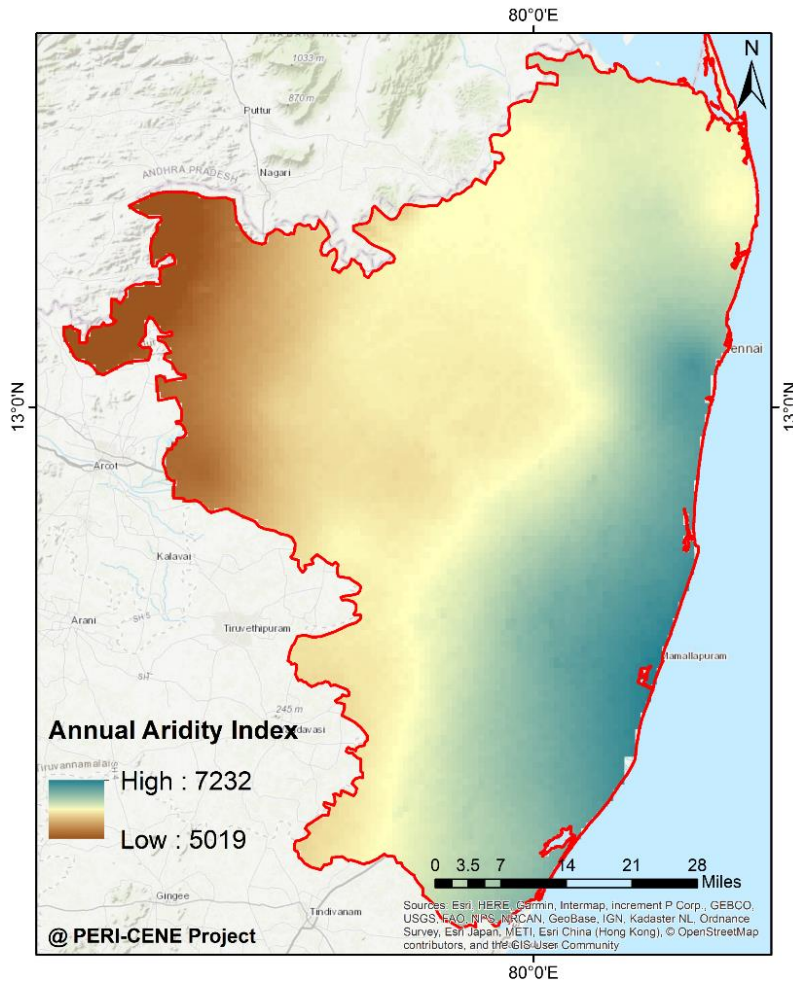
3. VULNERABILITY THEME

A) Land use and Land cover Map



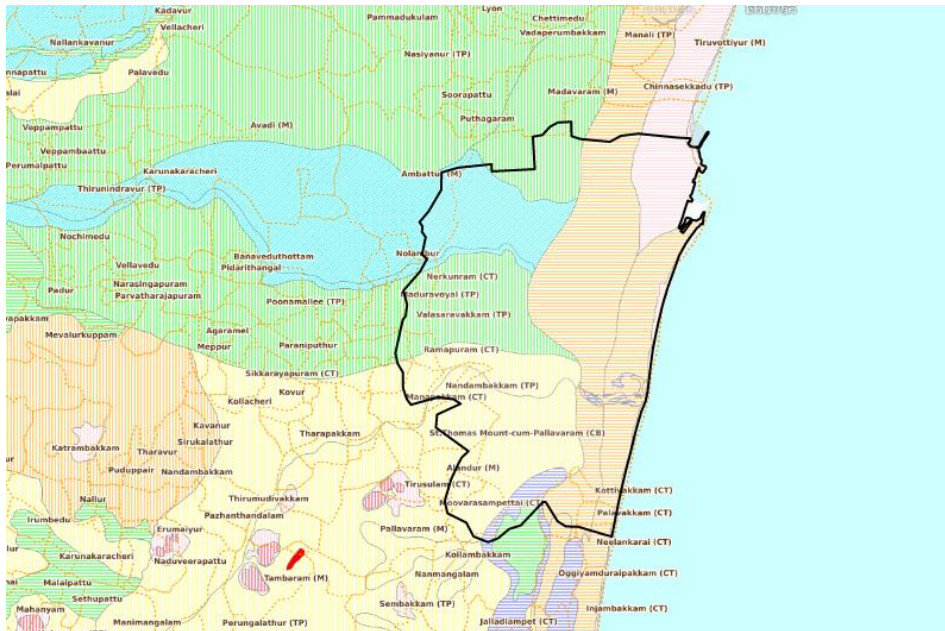
Source: Bhuvan, NRSC

B) Chennai Aridity Index Map



Source: Meheub (BioCLIM Data)

C) Chennai Groundwater Prospect



Source: Bhuvan, NRSC

4) PRIORITIES AND OPPORTUNITIES

A) Chennai Water Ecosystem

